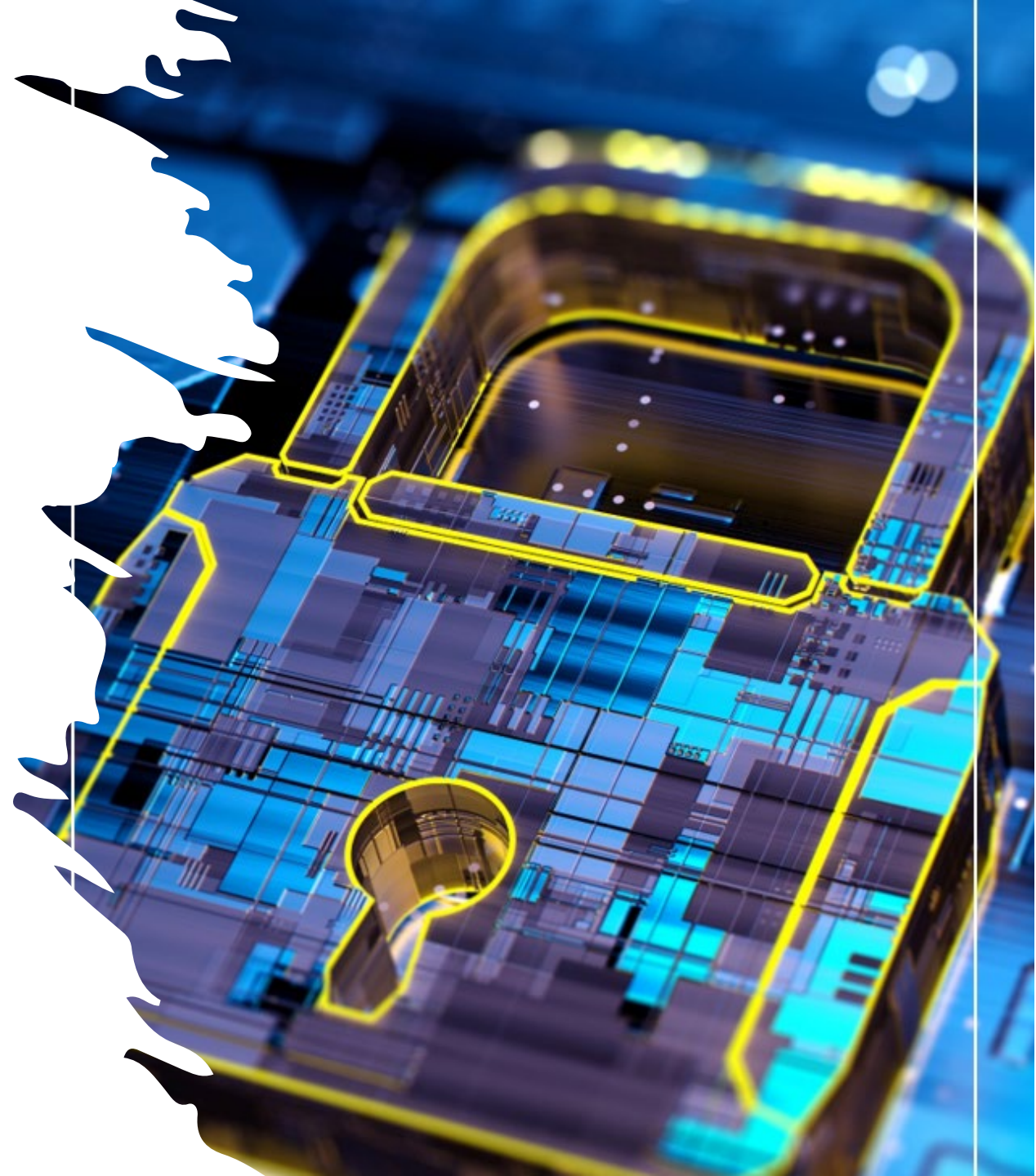


Faced with a hard cyber insurance market and even more limited options for local governments to obtain cyber insurance, the MEL has launched a first-of-its-kind Cyber JIF effective January 1, 2023.

Modeled after the MEL's Environmental Risk Management Fund, the Cyber JIF will offer cyber insurance coverage and risk management tools to assist local governments with mitigating the financial and security risks of cyber threats in today's landscape.







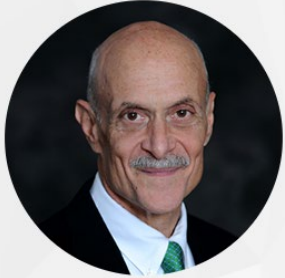
- ✓ **Insurance** Robust coverage for legal, forensics, extortion, interruption, etc.
- ✓ **Security Services** Employee Training, Phishing Campaigns, Vulnerability Scanning, Penetration Testing
- ✓ **Risk Management Program** Customized by The Chertoff Group for today's risks of NJ local governments, and aligned with CIS and Mitre ATT&CK framework
- ✓ **Policies** Custom template policies for Incident Response, Technology Practices and Password Management
- ✓ **Cybersecurity Grants** Will be identifying opportunities for grants that may be available to assist members with implementation of heightened cyber security protections



**ATT&CK®**



# About The Chertoff Group



**MICHAEL CHERTOFF**

Co-Founder and Executive Chairman

## Previous Government Service:

- Secretary, U.S. Department of Homeland Security (2005 – 2009)
- Federal Judge, U.S. Court of Appeals for the Third Circuit (2003 – 2005)
- Assistant Attorney General of the United States, Criminal Division (2001 – 2003)



**ADAM ISLES**

Principal and Head of Cybersecurity Practice

## Previous Experience

- Raytheon, Director of Strategy and Policy Consulting for homeland security
- U.S. Department of Homeland Security (DHS), Deputy Chief of Staff
- U.S. Department of Justice, Trial Attorney Criminal Division

## MISSION.

We apply our security expertise, technology insights and policy intelligence to help clients build resilient organizations, gain competitive advantage and accelerate growth.



# ■ Key Fund Professionals



**David Grubb**

Senior Partner, PERMA

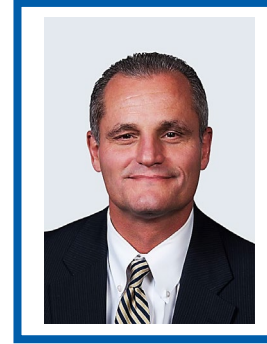
Executive Director, NJ Cyber JIF



**Paul Forlenza**

Sr. Program Administrator, Risk Program Administrators

JIF Deputy Executive Director



**Joseph Hrubash**

Senior Partner, PERMA

Executive Director, NJ Cyber JIF



**Cathleen Kiernan**

Partner, PERMA

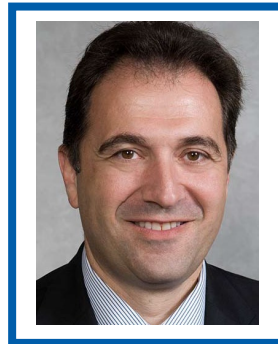
Deputy Executive Director, NJ Cyber JIF



**Edward J. Cooney, MBA**

Partner, Conner Strong & Buckelew

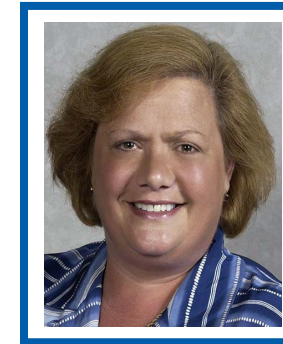
Underwriting Manager, NJ Cyber JIF



**Fred Semrau, Esq.**

Partner, Dorsey & Semrau

JIF Attorney



**Barbara Murphy**

President, Risk & Loss Managers

JIF Planning Consultant

# Insurance Offering Overview

\$6,000,000	Excess Insurers	\$6,000,000 County JIF Aggregate		
\$3,000,000		\$3,000,000 Each Claim Limit		
\$350,000	NJ Cyber JIF Retention	20% Copay	0% Copay	\$0 Deductible & 0% Copay
\$100,000				
\$50,000	Member Deductibles	\$50,000 Deductible	\$25,000 Deductible	
\$25,000				
\$0				
	Compliance Level	Basic	Upgraded	Enhanced





# ■ Compliance & Deductibles

**Level 1 “Basic”** – *Not meeting minimum security controls*

- \$50k Deductible plus 20% Copay of next \$300k (up to \$110k out of pocket)

**Level 2 “Upgraded”** – *Minimum security controls*

- \$25,000 Deductible (up to \$85k in savings)

**Level 3 “Enhanced”** – *Advanced security controls*

- \$0 Deductible (up to \$110k in savings)

*\*\*Members in compliance with Tier 1 of the current MEL Cyber Program (v2) prior to 1/1/23 will be grandfathered in Level 2 until 1/1/24\*\**

## ■ Security Services - \* INCLUDED \* with your insurance!

- **Employee Training** – Annual training of at least one hour provided by best-in-class education provider, like KnowBe4 or Wizer, with continuous phishing testing.
- **Vulnerability Management** – Internal and External vulnerability testing and management services performed on a monthly basis.
- **Security Consulting** – Survey on network architecture and application usage to deliver broad security advice, performed by The Chertoff Group.
- **Template Policies** – Template Technology Practices Policy and Incident Response Plan, created in conjunction with The Chertoff Group.
- **eRisk Hub** – Free access to our insurer's cyber portal for access to cybersecurity news, reports, training videos, informational items, template policies, and more.



# ■ Cybersecurity Risk Management Framework

- **Asset Management** – *Inventory of your physical technology ecosystem*
- **Data Management** – *Inventory of your digital technology ecosystem*
- **Account Management** – *User account inventory and access security, including MFA*
- **Vulnerability Management** – *Vulnerability scans and patching cadence*
- **Logging** – *Logging practices*
- **Defensive Tools & Strategies** – *Antivirus, firewalls, rules and settings*
- **Cyber Hygiene** – *Employee training and testing*
- **3<sup>rd</sup> Party Risk Management** – *Cybersecurity assessments of the organizations you do business with*
- **Policies & Procedures** – *Documentation of all security practices, Incident Response Plan and Business Continuity*
- **Penetration Testing** – *Network penetration testing*

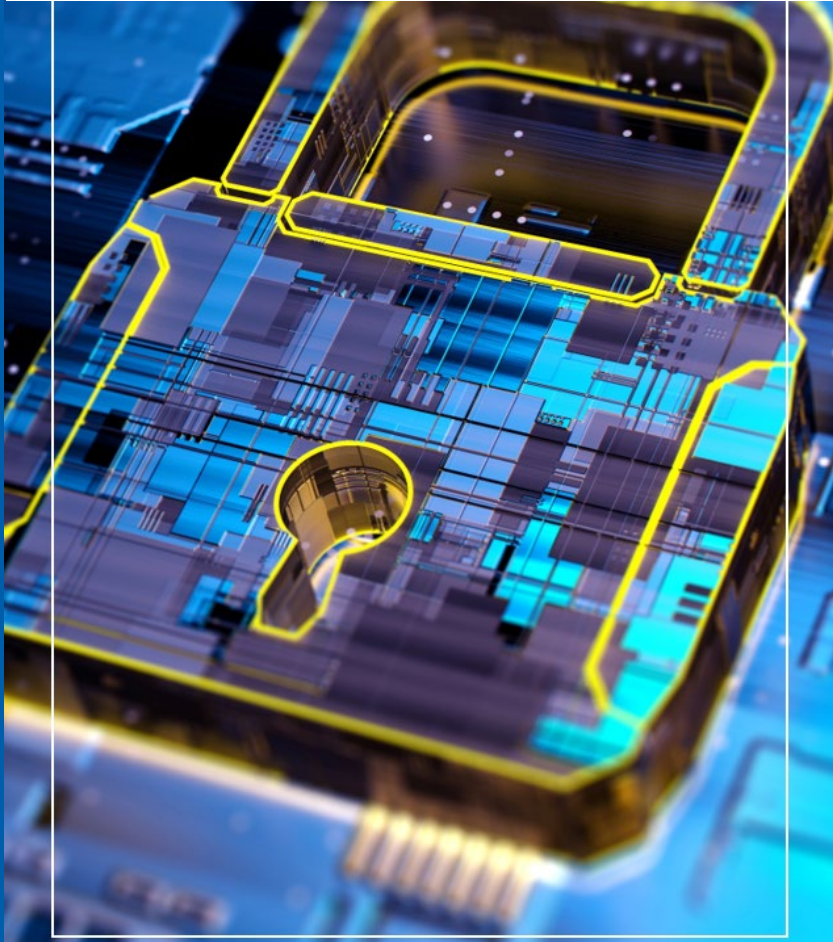
Designed by



# ■ Notable Changes in Security Control Groups

- Multi Factor Authentication (MFA) and Virtual Private Network (VPN) moved to Minimum Security
- Inventory of Technology Assets added in Minimum Security
- Data Management added in Minimum Security
- Vulnerability Management moved to Minimum Security
- Penetration Testing added in Advanced Security
- Endpoint Detection & Response (EDR) added to Minimum Security
- Access Privilege Controls moved to Minimum Security

Assisted by



## ■ Cybersecurity Grants

### Identification of grants from different organizations for cybersecurity

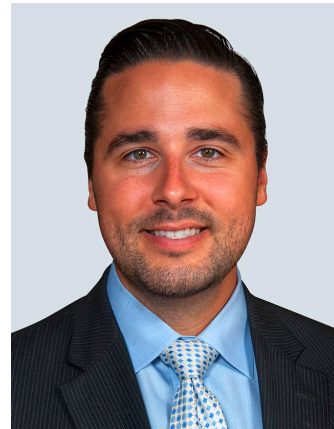
- CISA / Federal Government launched \$1 Billion grant package for state and local government
- Facilitate discussions with sector agencies, such as water sector and Homeland Security





# Contact Us

For more information, please reach out



---

## Edward J. Cooney, MBA

Partner / Senior Account Executive

Underwriting Manager, NJ Cyber JIF

**P** (973) 659-6424

**E** [ecooney@connerstrong.com](mailto:ecooney@connerstrong.com)

**W** [www.connerstrong.com](http://www.connerstrong.com)



---

## Cathleen Kiernan

Partner / Senior Account Executive

Deputy Executive Director, NJ Cyber JIF

**P** (201) 518-7031

**E** [catek@permainc.com](mailto:catek@permainc.com)

**W** [www.permainc.com](http://www.permainc.com)